

This is a watermark for the trial version, register to get the full one!

*Company information*

Benefits for registered users:

- 1.No watermark on the output documents.
- 2.Can operate scanned PDF files via OCR.
- 3.No page quantity limitations for converted PDF files.

**Remove Watermark Now**



## COMPANY INTRODUCTION

Hangzhou Jiayuan is a manufacturing and trading Company located in Hangzhou city China. We specialize in the manufacturing of Copper wire, CCA Wire, Enameled Aluminum and Enameled Copper wire. We supply our products in the domestic market as well as abroad.

Besides our in house manufactured products we also supply Power cables, Robot cables, Elevator cables and electric

This is a watermark for the trial version, register to get the full one!

Benefits for registered users:

- 1.No watermark on the output documents.
- 2.Can operate scanned PDF files via OCR.
- 3.No page quantity limitations for converted PDF files.

**Remove Watermark Now**

ensure that our clients receive the best products available in

Our moto is to not only supply high quality products but also

provide options and better solutions as per requirements of

our clients. To ensure long term cooperation and business relation.

Website:[www.jayuan.cn](http://www.jayuan.cn)

Alibaba Store:[hzjytc.en.alibaba.com](http://hzjytc.en.alibaba.com)

Tel:0571-63814088

Email:[Marketing@jayuan.cn](mailto:Marketing@jayuan.cn)

Add:E3A06 No. 68 Huaqiao Road. Jincheng Town, Lin'an  
Hangzhou,Zhejiang,China

# Electric Wire

## BV



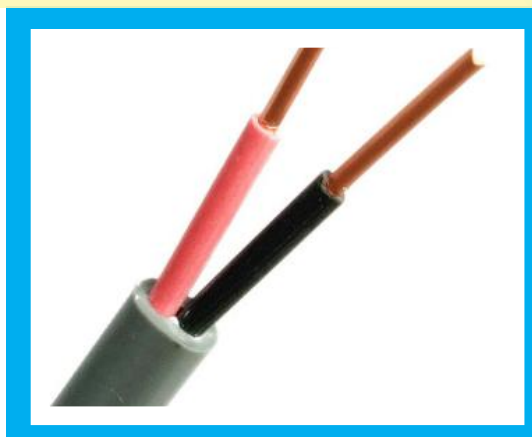
Item: BV/BLV  
 Standard: BS6004/ IEC60227  
 Voltage: 450/750 V  
 Conductor: Cu/ CCA/ AL  
 Material: PVC  
 Section: 0.5 mm<sup>2</sup>—240 mm<sup>2</sup>  
 Application: Building wire for placing into trucking and conduit

This is a watermark for the trial version, register to get the full one!

Benefits for registered users:

- 1.No watermark on the output documents.
- 2.Can operate scanned PDF files via OCR.
- 3.No page quantity limitations for converted PDF files.

## BVVB

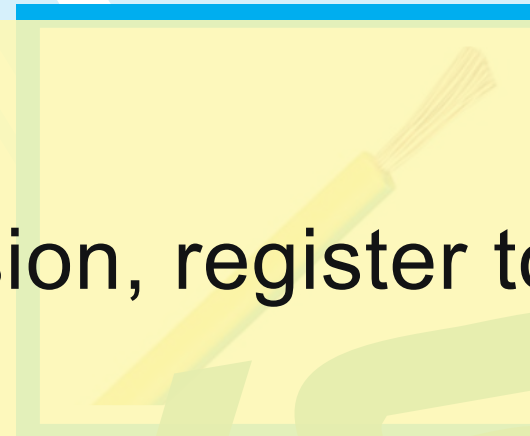


Flat Cable

Item: BVVB  
 Standard: BS6004/ IEC60227  
 Voltage: 300/500 V  
 Conductor: Cu/ CCC/ CCA  
 Material:PVC/PVC  
 Section: 2\*0.75 mm<sup>2</sup>—3\*16 mm<sup>2</sup>  
 Application: Suitable for indoor or outdoor surface wiring

Nominal corss section (mm <sup>2</sup> )	Diameter of conductor (mm)	Insulation thickness (mm)	Sheath thickness (mm)	Max.ouer Diameter (mm)	Ref.weight (kg/km)	Conductor resistance at 20 C ≤(Ω/km)
2*0.75~3*6	2*1/0.97 ~3*7/1.04	0.6~1.8	0.9~1.1	4.6*7.1 ~7.8*18.2	44.59~296.52	24.5~3.08

## RV



Item: RV  
 Standard: BS6004/ IEC60227  
 Voltage: 450/750 V  
 Conductor: Cu/ CCA  
 Material: PVC  
 Section: 0.5 mm<sup>2</sup>—240 mm<sup>2</sup>  
 Application: Building wire for placing into trucking and conduit

**Remove Watermark Now**

0.5~240	16/0.2~1225/0.5	0.6~1.8	2.6~29.5	8~2420	39~0.0801
---------	-----------------	---------	----------	--------	-----------

## RVV



Flexible Single Wire

Item: RVV  
 Standard: BS6500/ IEC60227/VDE0281  
 Voltage: 300/500 V  
 Conductor: Cu/ CCC/ CCA  
 Material: PVC/PVC  
 Section: 2\*0.5 mm<sup>2</sup>—5\*6 mm<sup>2</sup>  
 Application: Suitable for indoor or outdoor surface wiring

Nominal cross section (mm <sup>2</sup> )	Diameter of conductor (mm)	Insulation thickness (mm)	Sheath thickness (mm)	Max. outer Diameter (mm)	Ref. weight (kg/km)	Conductor resistance at 20 C ≤(Ω/km)
2*0.75~5*4	2*24/0.2~5*56/0.3	0.6~0.8	0.8~1.3	6.5~14.2	52~380	26~4.95

## YJV



Item: YJV/YJLV  
 Standard: BS6346/ IEC60502  
 Voltage: 0.6/1 KV  
 Conductor: Cu/ ALUMINUM  
 Material: XLPE/ PVC  
 Section: 1\*10 mm<sup>2</sup>—4\*240+120 mm<sup>2</sup>  
 Application: Used in electric transmission and distribution system

Power Cable (YJV/YJLV)

# High Voltage Cable

This is a watermark for the trial version, register to get the full one!

Benefits for registered users:

- 1.No watermark on the output documents.
- 2.Can operate scanned PDF files via OCR.
- 3.No page quantity limitations for converted PDF files.

Nominal cross section (mm <sup>2</sup> )	Insulation thickness (mm)	Sheath thickness (mm)	Overall Diameter (mm)	Cu. weight (kg/km)	Al. weight (kg/km)
1*10~5*240; 3*50+1*25~ 4*240+1*120	0.7~1.7	1.5~3	8~68.2	153~11367	95~4763

**Remove Watermark Now**



XLPE Armored Power Cable (Steel Tape Armored)

Conductor: Cu/ ALUMINUM  
 Material: XLPE/ STA/ PVC  
 Section: 2\*10 mm<sup>2</sup>—4\*240+120 mm<sup>2</sup>  
 Application: Using in electric transmission and distribution system

Nominal cross section (mm <sup>2</sup> )	Approx Diameter (mm)	Ref. weight (kg/km)	Current carrying(A)
3*2.5+3*0.5~ 3*240+3*35	12.5~69	232~10221	26~416

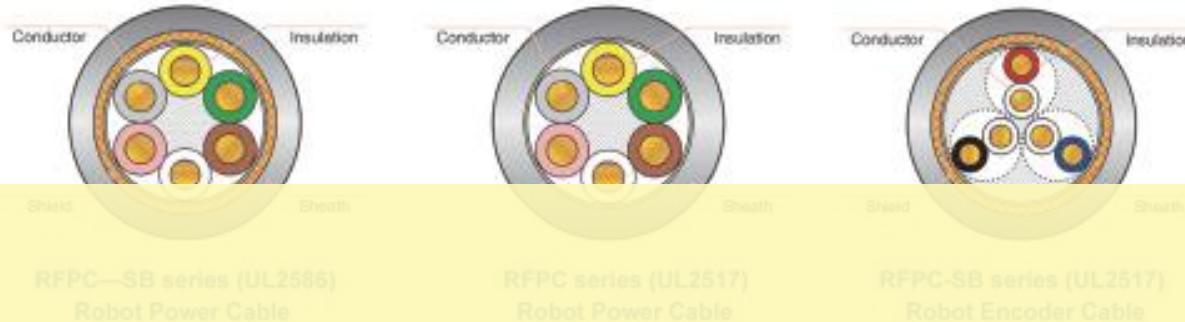
Nominal cross section (mm <sup>2</sup> )	Insulation thickness (mm)	Steel Tape thickness (mm)	Sheath thickness (mm)	Overall Diameter (mm)	Cu. weight (kg/km)	Al. weight (kg/km)
2*10~5*240; 3*50+1*25~ 4*240+1*120	0.7~1.7	2*0.3~2*0.5	1.8~3.5	19.3~74	673~13232	544~6428



# Robot Cable

RFPC-SB series(UL2586)/RFPC series (UL257)/RFPC-SB series (UL2517)

## Construction



# Elevator Cable

TVVPG-TV 10M/S

## Hight speed elevator cable

Construction 10m/s TVVBPG-TV round cable with screen,video,fiber optic and cable network cable mult-function elevator cable

This is a watermark for the trial version, register to get the full one!

Benefits for registered users:

- 1.No watermark on the output documents.
- 2.Can operate scanned PDF files via OCR.
- 3.No page quantity limitations for converted PDF files.

**Remove Watermark Now**

Conductor	Tinned annealed copper
Rated voltage:	300V
Insulation:	ETFE
Voltage withstand test:	AC2.0kV/min
Shield:	Tinsel
Sheath:	Flame-retardant Heat-resistance PVC
Insulation resistance:	100MΩ.km(20℃)

Certificate	RoHS,CE	Standard	GB/T 5023.6, IEC60227-6
Conductor	Copper	Sheath	PVC for elevator cable
Insulation	PVC	Rated Voltage	300/500V
Shield	Copper or Tinned copper	Voltage withstand test	2000V/5min

\*Nate:Above are the standard products also we can on customer requirement.

\*Note:We could manufacture the control core,coaclal,fiber optic and networkcable, and the number of units design acording to customer requirements

# Elevator Cable

ETT,ETP 4M/S TVVBP 4M/S

**Low speed elevator cable**  
4m/s TVVBP-TV flat lift cables assembly of stranding cores with shielded pairs

**Characteristics**  
Customized with connector assembly

Bending Resistance Running speed: ≤4m/s Travelling height: ≤80m Loop diameter: ≤700mm

Operating temperature: -15°C~+70°C 3million bending test Certificate:RoHS,CE,CCC

**Construction**

BP 300/500V 36×0.75+2P×2×0.75mm<sup>2</sup>

4m/s ETT/ETP UL stand Travelling Cable

3million bending test Steel rope Insulation ETT 14×14AWG

Conductor	Copper	Sheath	PVC for elevator cable
Insulation	PVC	Rated Voltage	300/500V
Shield	Copper or Tinned copper	Voltage withstand test	2000V/5min

\*Note:Note:Cables recommender for installstlons where the suspended length exceed 60m,we could add steel rope

# Elevator Cable

TVVBP-TV 10M/S

## Hight speed elevator cable

● **Construction** 10m/s TVVBPG-TV High flat lift cables assembly cores with shielded pairs

Power cable Steel wire Coaxial cable Shielded pairs

TVVBPG-TV 300/500V 30×0.75+2P×2×0.75mm<sup>2</sup>

**Characteristics**  
Customized with connector assembly

Bending Resistance Running speed: ≤10m/s Travelling height: ≤300m

Certificate:RoHS,CE SYV75-750 Standard: JB/T 8734.6, EN50214

**Remove Watermark Now**

Conductor	Copper	Sheath	PVC for elevator cable
Insulation	PVC	Rated Voltage	300/500V
Shield	Copper or Tinned copper	Voltage withstand test	2000V/5min

\*Note:We could manufacture the control core,coaclal,fiber optic and networkcable, and the number of units design acording to customer requirements

# PV Cable

## Photovoltaic Cable

### Photovoltaic Cable PV1-F Series

#### ● Construction



#### ● Characteriseics

This is a watermark for the trial version, register to get the full one!

Benefits for registered users:

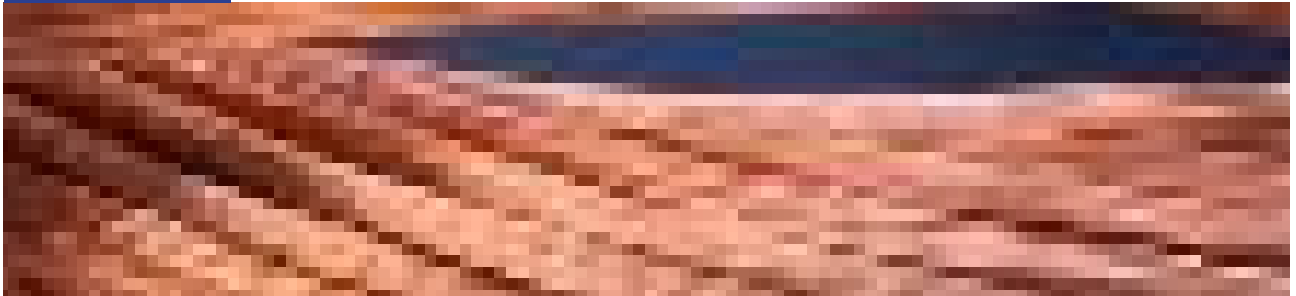
- 1.No watermark on the output documents.
- 2.Can operate scanned PDF files via OCR.
- 3.No page quantity limitations for converted PDF files.

**Remove Watermark Now**

Oil Resistance	Chemical Resistance	Ozon Resistance
Temperature:	-40℃~+90℃	
Certificate:	RoHS ,TUV(Rheinland),CE; 2Pf G1169/08.07	
Conductor:	Tinned annealed copper	
Insulation:	XLPE	
Sheath:	Flame-retardant XLPE	
Rated voltage:	AC 0.6/1kV; DC 1.8kV	
Voltage withstand test:	AC6.5kV/min	
Insulation resistance:	15MΩ·km(20℃)	

\*Note:This product instlationm sheath color are black, also we can have other colors from customers" requirements. Above are the standard products also we can design on customer requirement.

# ***Cable Material Wire***



This is a watermark for the trial version, register to get the full one!

Benefits for registered users:

- 1.No watermark on the output documents.
- 2.Can operate scanned PDF files via OCR.
- 3.No page quantity limitations for converted PDF files.

**Remove Watermark Now**





# Cable Material Wire

## Copper wire & Tin plated copper wire



图 8 CCA(copper clad aluminum)

This is a watermark for the trial version, register to get the full one!

Benefits for registered users:

- 1.No watermark on the output documents.
- 2.Can operate scanned PDF files via OCR.
- 3.No page quantity limitations for converted PDF files.

**Remove Watermark Now**



图 7 Tin plated Copper Wire

# Cable Material Wire

## CCA & CCS

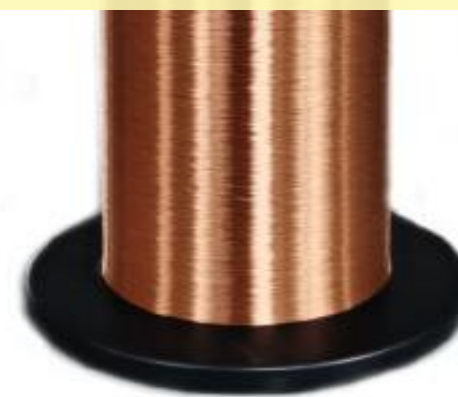


图 10 Enamelled CCA wire



图 11 Enamelled copper wire