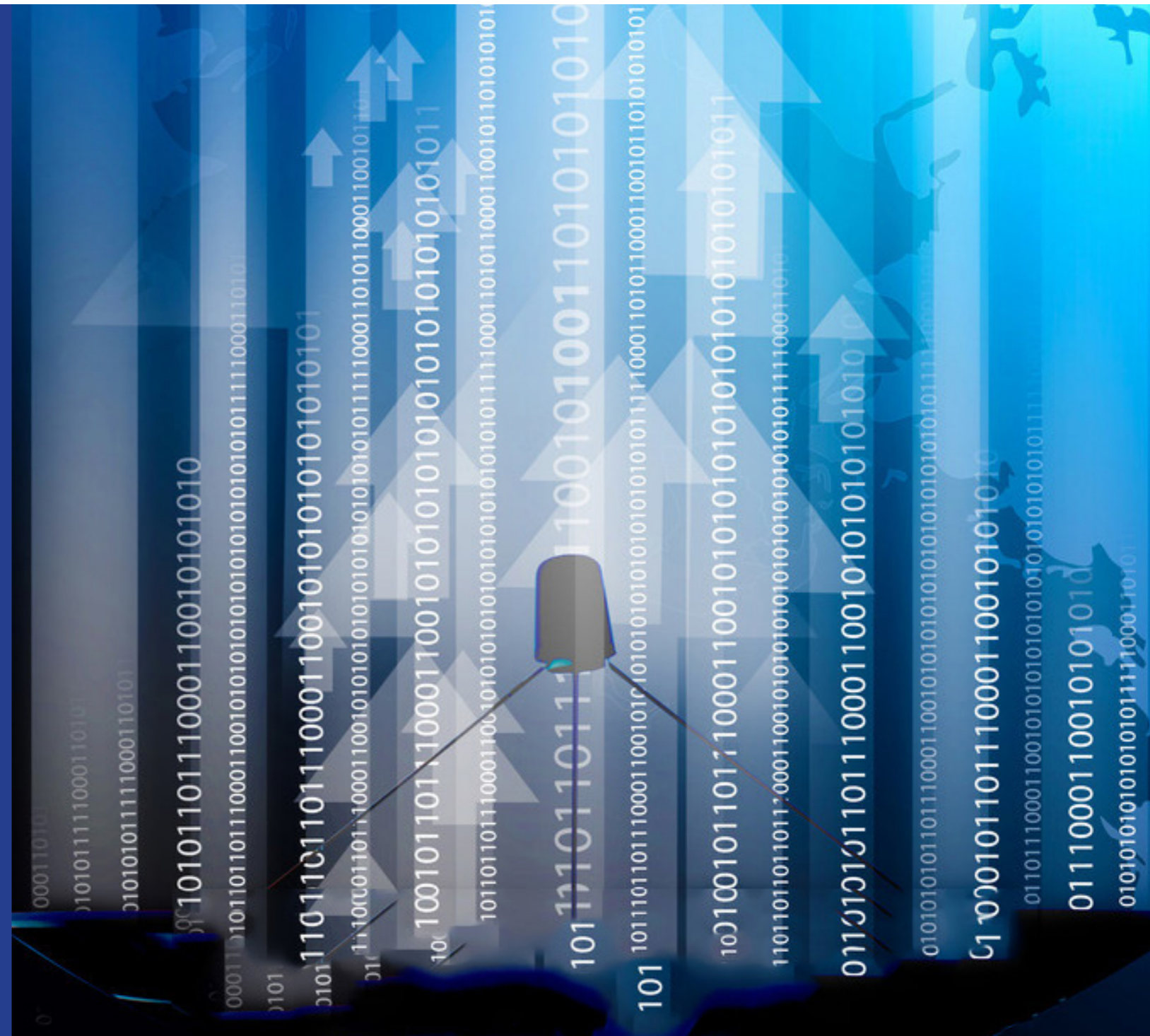


HANGZHOU JIAYUAN IMPORT AND EXPORT CO.,LTD.

TELECOM CABLES

ADD: E3A06 NO. 68 HUAQIAO ROAD, JINCHENG TOWN,
LIN'AN HANGZHOU, ZHEJIANG, CHINA
WEBSITE: WWW.JAYUAN.CN
ALIBABA STORE: HZJYTC.EN.ALIBABA.COM
TEL: 0571-63814088
EMAIL: MARKETING@JAYUAN.CN





COMPANY INTRODUCTION

Hangzhou Jiayuan is a manufacturing and trading Company located in Hangzhou city China. We specialize in the manufacturing of Copper wire, CCA Wire, Enameled Aluminum and Enameled Copper wire. We supply our products in the domestic market as well as abroad.

Besides our in house manufactured products we also supply Power cables, Robot cables, Elevator cables and electric wires. Our OEM suppliers follow international standards to ensure that our clients receive the best product available in the market as well as recommendation for the new products and solutions in the market.

For the telecom sector we supply Optic fiber cables, LAN Cables, Patch Cord cables as well as all the components. Our moto is to not only supply high quality products but also provide options and better solutions as per requirements of our clients. To ensure long term cooperation and business relation.

Website:www.jayuan.cn

Alibaba Store:hzjytc.en.alibaba.com

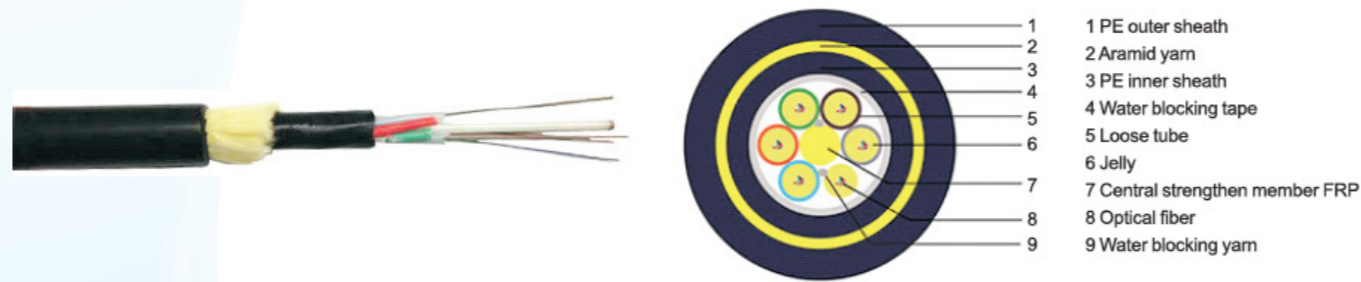
Tel:0571-63814088

Email:Marketing@jayuan.cn

Add:E3A06 No. 68 Huaqiao Road. Jincheng Town, Lin'an
Hangzhou,Zhejiang,China

i: Optic Fiber Cable

ADSS Optic Fiber Cable



ADSS Optical Cable Character:

- 1.Can be installed without shutting off the power
- 2.Light weight and small diameter reducing the load caused by ice and wind and the load on towers and backonge.
- 3.Large span lendths and the largest span is over 1000m.
- 4.Good performanceof tensile strength and temperature.

ADSS Optical Cable Applications:

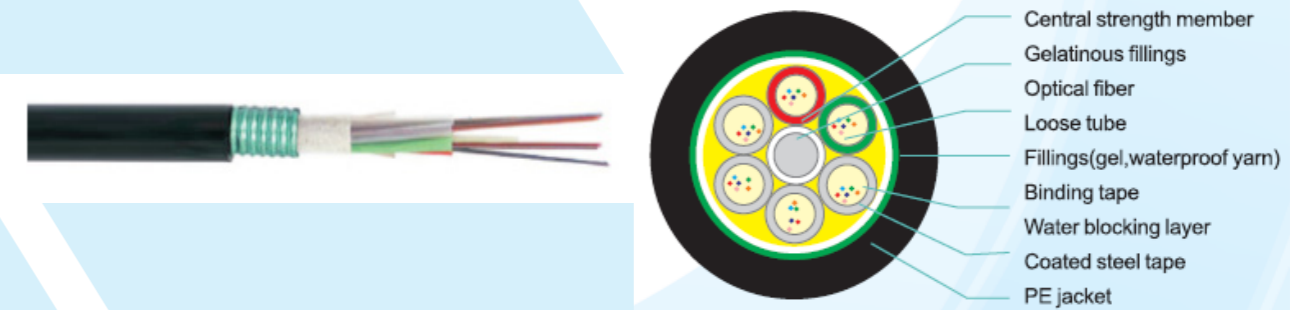
- 1.In old and new power lines,when the tower is erected on the same tower as the power line,it needs a large span.
- 2.Strong electric field,multi-lightning,cold and other areas.

| Fibers | Struc- ture | Cable O.D.(mm) | Weight (kg/km) | Max.Op- erating Tension (KN) | Max.An- ti-pulling Tension (KN) | Max.An- ti-Crush- ing Force. Long ter- m,Short term (N) | | Bending Radius. Static Dynam- ic(mm) | |
|--------|----------------|-------------------|-------------------|---------------------------------------|--|--|------|--|-----|
| | | | | | | 1000 | 3000 | 12.5D | 25D |
| 2~144 | 1+6~ 1+12 | 11.9~16.7 | 117~229 | 4.0 | 15 | 1000 | 3000 | 12.5D | 25D |

i: Optic Fiber Cable

(GYTS,GYTA,GYFTY,GYTA53) Optic Fi ber Cable

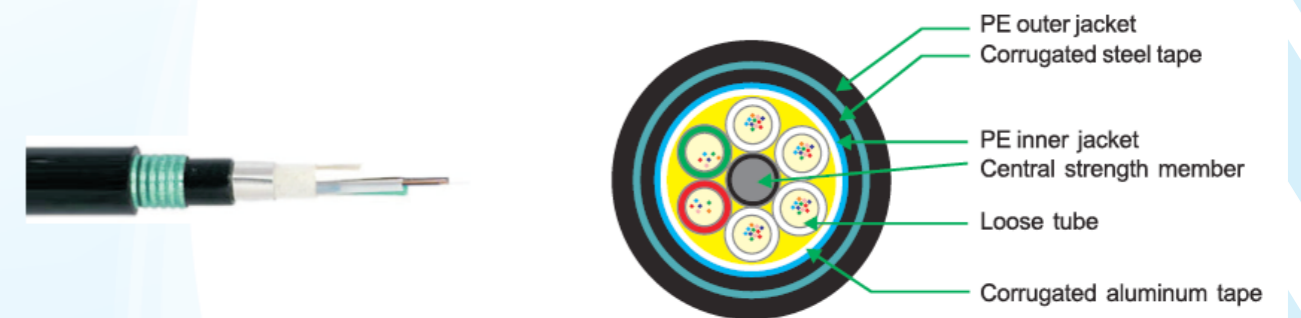
GYTS/GYTA:



GYFTY:



GYTA53:



Application:Aerial,Duct,Buried

| Model | Fibers | Tubes | Max.Fibers per tube | Cable O.D. (mm) | Weight (kg/km) | Max.Pulling Power Long/ Short-term (N) | Max.Pres- sure Long/ Short-term (N) |
|--------|--------|-------|------------------------|--------------------|-------------------|--|--|
| GYTS | 2~288 | 5~24 | 6 or 12 | 9.8~19 | 110~290 | 600/2500 | 300/1000 |
| GYTA | 2~288 | 5~24 | 6 or 12 | 9.8~19 | 90~290 | 600/3000 | 300/1000 |
| GYFTY | 2~288 | 5~24 | 6 or 12 | 9.8~19 | 105~280 | 400/3000 | 300/1000 |
| GYTA53 | 2~288 | 5~24 | 6 or 12 | 12~22 | 200~400 | 1000/3000 | 1000/3000 |

i: Optic Fiber Cable

(FTTH) Optic Fiber Cable



Products Description

The structure is 1-12 colored fibers combined with two FRP(or steel wires),which can protect the fiber inside by providing sufficient tensile strength and good resistance to lateral crushing.

Properties

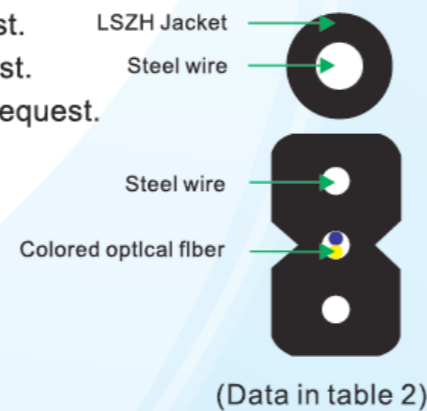
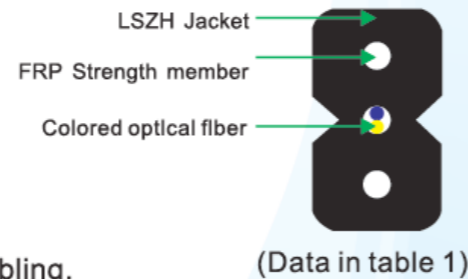
- Simple and convenient structure, convenient for indoor cabling.
- Good design for lateral crushing resistance.
- Fiber count is 1-12 cores,can be other fiber count upon request.
- White color for indoor use, can also be other color upon request.
- LSZH material for out jacket,can also be other material upon request.

Application

- As FTTH cable,for indoor horizontal and vertical cabling.
- Indoor cabling under carpet and along corner.

Temperature range

-20°C~+70°C



| Model | Fibers | Cable O.D.(mm) | Weight (kg/km) | Bend Radius | Max.Pull-ing Power Long/Short-term (N) | Max.Pres-sure Long/Short-term (N) |
|-------|--------|----------------|----------------|-------------|--|-----------------------------------|
| FTTH | 1~6 | 2*5 | 21 | 15/30D | 300/600 | 400/1000 |
| FTTH | 6~12 | 2*5 | 21 | 15/30D | 300/600 | 400/1000 |

ii: LAN Cable

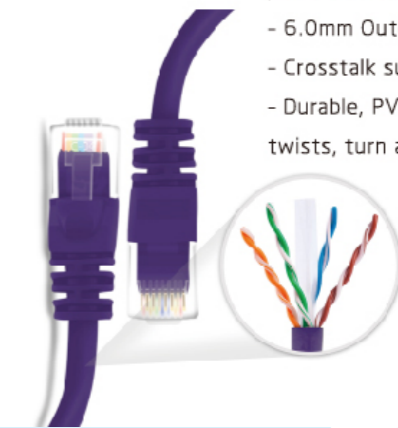
CAT 5E

- 4 twisted pairs of color coded, 24AWG , strande bare copper wires
- 5.0mm Outer Diameter
- Durable, PVC/PE outer jacket resists twists, turn and abrasions



CAT 6

- 4 twisted pairs of color coded, 24AWG , strande bare copper wires
- 6.0mm Outer Diameter
- Crosstalk suppression spline
- Durable, PVC/PE outer jacket resists twists, turn and abrasions



| | |
|----------------|-----------------------|
| Items | Cat5e,Cat6,Cat6a,Cat7 |
| Type | UTP,STP,SFTP |
| Size(mm) | Normal 0.4~0.5 |
| Usage | Indoor,Outdoor |
| Connector | RJ45,GG45 |
| Frequency(MHz) | 100,250,500,600 |

iii: Patch Cord Cable

MPO Fanout Patch Cords

MPO主干缆跳线，用于主干信号传输，两边多均为MPO接头，多使用圆缆，常用芯数有12/24/36/48/72/96/144芯。

MPO trunk patch card is used for signal transmission, both sides are MPO connectors. Common cables are round type, and fiber counts are 12/24/36/48/72/96/144cores.

8/12/24芯-1*1单管式
8/12/24cores-1*1 single tube



24/48/72/96/144芯-N*N多管式
24/48/72/96/144cores-N*N multi-tubes



12/24/36芯-1*N分支多管式
12/24/36 cores-1*N fanout multi-tubes



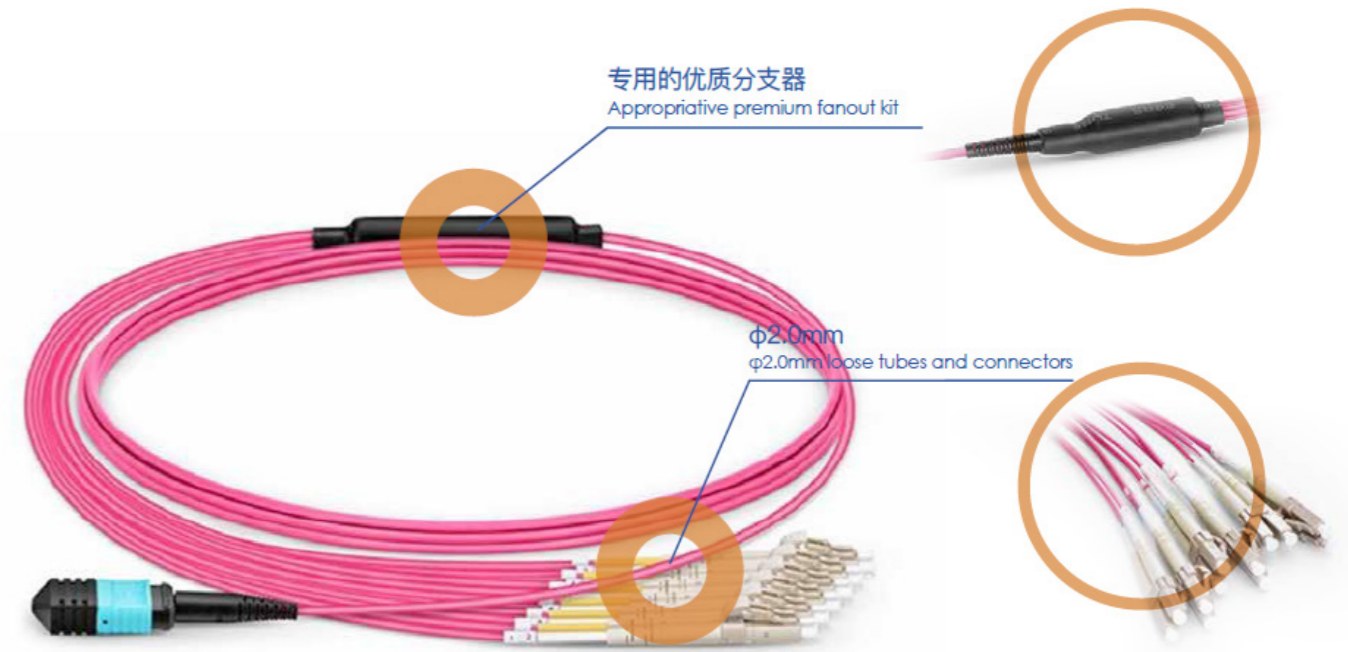
| Fiber Counts | Loss Degree | Structure | Fiber Type | Jacket |
|--------------|--|------------------------------------|------------|----------------|
| 8~144 | Standard Loss ≤0.7db Low Loss ≤0.35db | Mini Bundle,Ribbon, Bare Ribbon | G652D | OFNP,OFNR,LSZH |

iii: Patch Cord Cable

MPO TRUNK Patch Cords

MPO Fanout转接跳线，主要用于QSFP模板与SFP模块之间的互联，或者MPO接头与LC接头之间的转接。其特点是转接分支出来的缆径较粗，标准为Φ2.0mm粗。

MPO Fanout Hybrid Patch card is mainly used to connect QSFP and SFP modules, or MPO and the LC connectors. Nomally OD of the fanout cables is 2.0mm.



| Fiber Counts | Loss Degree | Structure | Fiber Type | Jacket |
|--------------|--|-----------------------|------------|----------------|
| 8~24 | Standard Loss ≤0.7db Low Loss ≤0.35db | Mini Bundle Ribbon | G652D | OFNP,OFNR,LSZH |

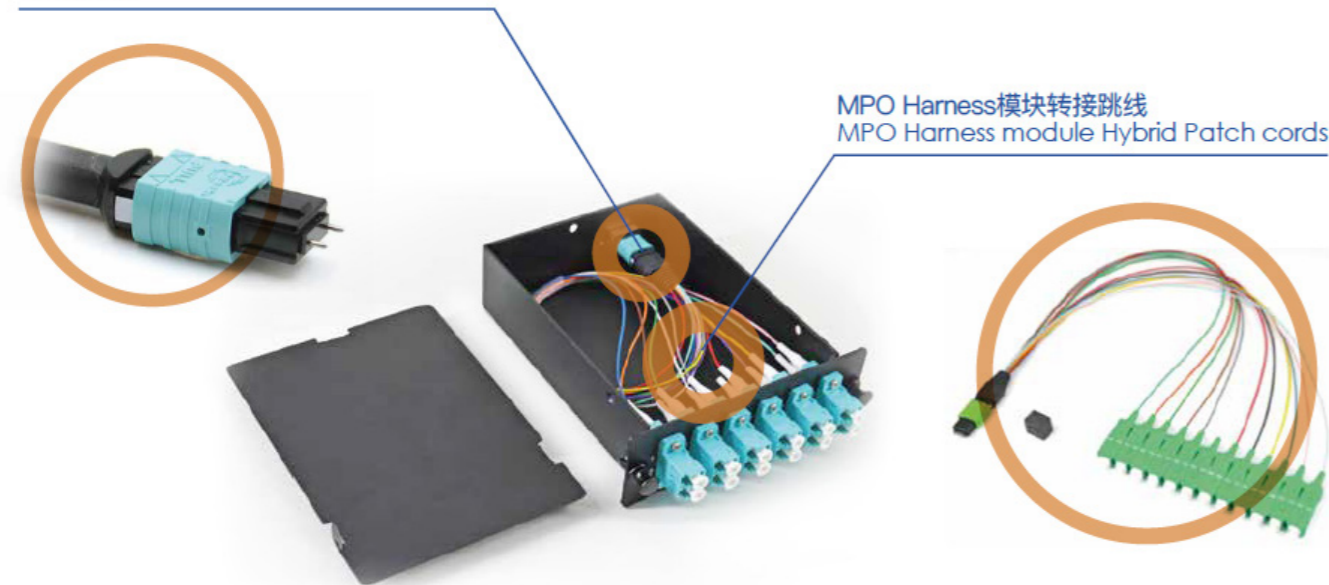
iii: Patch Cord Cable

MPO HARNESS Module Hybrid Patch Cords

MPO Harness模块转接跳线，是专用于小型模块盒内部的转接跳线。其特点是米数较短，转接分支出来的缆径较细，标准为Φ0.9mm,MPO端连接头为公头带PIN针。

MPO Harness module Hybrid Patch cords are used in MPO cassette only. Such patch cords are short, and OD of the fan-out cables are small- normally it's Φ0.9mm,and the MPO connector is male.

MPO端为公头
MPO-Male



| Fiber Counts | Loss Degree | Structure | Fiber Type | Jacket |
|--------------|--|------------------------------------|------------|----------------|
| 8~24 | Standard Loss ≤0.7db Low Loss ≤0.35db | Mini Bundle, Ribbon,Bare Ribbon | G652D | OFNP,OFNR,LSZH |

iii: Patch Cord Cable

CONNECTORS



图1 Fullaxs



图2 Mini SC



图3 NSN unitboot



图4 PDLC



图5 RDC rosenberg

iv: Coaxial Cable

RG59



| Material | | Diameter(mm) |
|-------------------|-------------------------|--------------|
| 1.Inner Conductor | Bare Copper | 0.81 |
| 2.Dielectric | Physical Foam PE | 3.66 |
| 3.Outer Conductor | Bonded Al Foil+Al Braid | 4.28 |
| 4.Jacket | PVC or PE | 6.10 |

Electric Characteristics

| | |
|-----------------------|-----------|
| Capacitance(pF/m) | 52 |
| Impedance(ohm) | 75 |
| Velocity(%) | 85 |
| Max Oper Voltage(VMS) | 3000 |
| Operating Temp(℃) | -40 ~ +85 |

RG6



| Material | | Diameter(mm) |
|-------------------|-------------------------|--------------|
| 1.Inner Conductor | Bare Copper | 1.02 |
| 2.Dielectric | Physical Foam PE | 4.57 |
| 3.Outer Conductor | Bonded Al Foil+Al Braid | 5.22 |
| 4.Jacket | PVC or PE | 6.91 |

Electric Characteristics

| | |
|-----------------------|-----------|
| Capacitance(pF/m) | 52 |
| Impedance(ohm) | 75 |
| Velocity(%) | 85 |
| Max Oper Voltage(VMS) | 3000 |
| Operating Temp(℃) | -40 ~ +85 |

RG11



| Material | | Diameter(mm) |
|-------------------|-------------------------|--------------|
| 1.Inner Conductor | Bare Copper | 1.63 |
| 2.Dielectric | Physical Foam PE | 7.11 |
| 3.Outer Conductor | Bonded Al Foil+Al Braid | 7.81 |
| 4.Jacket | PVC or PE | 10.03 |

Electric Characteristics

| | |
|-----------------------|-----------|
| Capacitance(pF/m) | 52 |
| Impedance(ohm) | 75 |
| Velocity(%) | 85 |
| Max Oper Voltage(VMS) | 4000 |
| Operating Temp(℃) | -40 ~ +85 |